


How to read (display) and write (input) Chinese/Japanese/Korean (CJK) on the Internet

In order to display and input CJK on the browser, the easiest way to do it is to download and install the **Microsoft Global Input Method Editors (IMEs)** of the language(s) that you need (each language is a separate package). This is the system extension that provides the language support to your English Windows system when you are using **Internet Explorer 5.x** (the Microsoft input system will not work for Netscape).

Web pages with appropriate META tags will be automatically displayed in the corresponding language, otherwise you will have to manually select the appropriate encoding for character set from **View > Encoding** for Microsoft IE. If you need to type CJK language on the Internet Explorer (e.g. doing a search), click on the **En** icon  (language indicator) located on the windows task bar at the right bottom corner of your screen, and select the language mode you need for the input.

- For English Win 98/Me/NT users

1. Download and install

For users without Office XP:

www.microsoft.com/msdownload/iebuild/ime5_win32/en/ime5_win32.htm

=> Microsoft Global IME 5.02 for Korean - with Language Pack

For users with Office XP:

<http://office.microsoft.com/assistance/preview.aspx?AssetID=HA010347361033&CTT=6&Origin=EC010553071033>

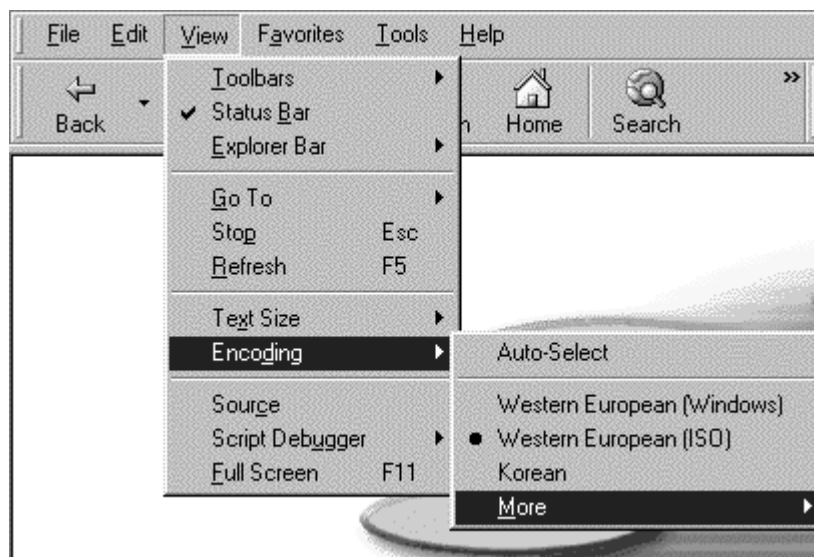
2. After Installation

There will be a small icon created on the task bar (right bottom corner of your screen).

It will display .

3. How to Read

In Internet Explorer 5.0 or higher, choose View -> Encoding -> More -> Korean, or View -> Encoding -> Korean if you can see Korean next to Encoding.

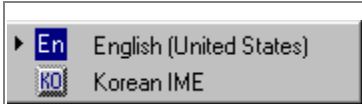









4. How to Write

In Internet Explorer 5.0 or higher, first click in any empty area of the window only where you can type. Now click on **En** from the task bar and then select **KO**.

The input character method bar will appear right above the task bar. **A** means you can type in English. Click on **A**, and then it will change to **가** so that you can write in Korean.

** Screen Shots **

	<p>This shows up only when writing in Korean is allowed.</p>
	<p>When KO is clicked, this shows up.</p>
	<p>When A is clicked, it changes to 가</p>
	<p>This enables you to write in Korean.</p>
	<p>This enables you to write in English.</p>
	<p>This is seldom used. Don't click. (Half / Full Character)</p>
	<p>Use this to change some Korean characters into Chinese characters.</p>
	<p>Help on Global IME</p>

5. Korean Keyboard



- For **English Win 2000/XP Professional** version users

The system should have the multilingual capacity if you have the right installation. The Global IMEs are not necessary on Windows 2000 since that OS has full-featured East Asian input support built in. **You just need to activate the capacity***. If your system does not have the pre-installation of the multilingual capacity, the system will ask for the Windows 2000/XP CD when you go through the set up procedures. Once you insert the CD, the system will install what it needs automatically.

*** How to activate the multilingual capacity on Window 2000:**

1. Double-click on the **Regional Options** at the **Control Panel**.
2. Under the **General** tab, check on the language that you want to add from the **Language settings for this System** box. You can check on multiple languages.
3. After that you need to go to the **Input Locales** tab and **Add** the particular input system that you want.
4. A small **Add Input Locale** dialogue box will pop up, scroll down and select the particular language that you want, a list of **Keyboard layout/IME** will be available for your choice. You can only set one language or one keyboard layout at a time, just go through the same procedures for any additional language/layout.

Related sites:

www.e-world.net/help/globalime.html

www.arts.monash.edu.au/korean/computing/keyboard.html

<http://depts.washington.edu/eacenter/cjk/#internet>

http://www.asia.ubc.ca/korean/a_menu/howto.htm

http://newton.uor.edu/Departments&Programs/AsianStudiesDept/Language/asianlanguageinstallation_XP.html

<http://www.seanspot.com/jwrite/MS-IME/GetIME/jwrite-getime-w2k.htm>

<http://depts.washington.edu/eacenter/cjk/>

Created and Compiled by
 Kyungmi "Mimi" Lee
 Outreach Services Coordinator
 Bergen County Cooperative Library System
mimi@bccls.org

October 22, 2003